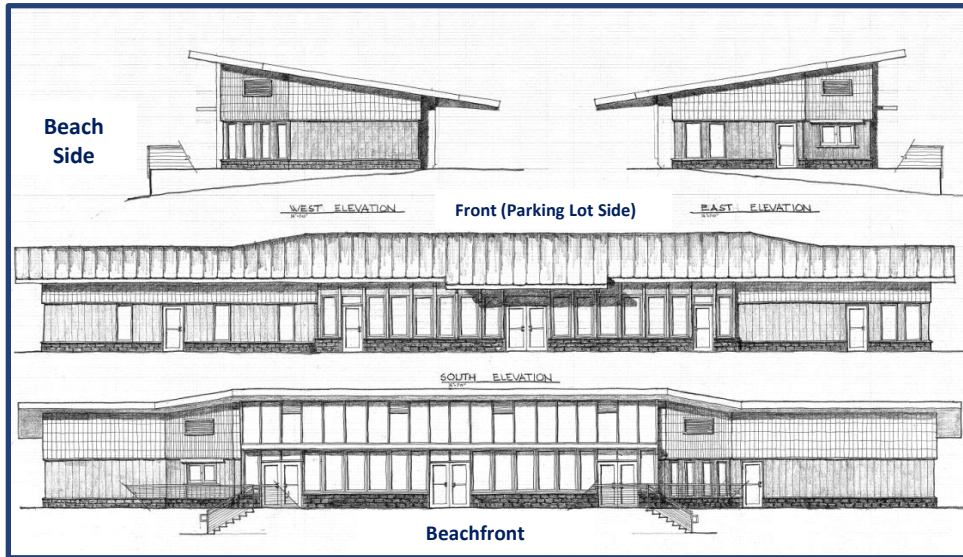


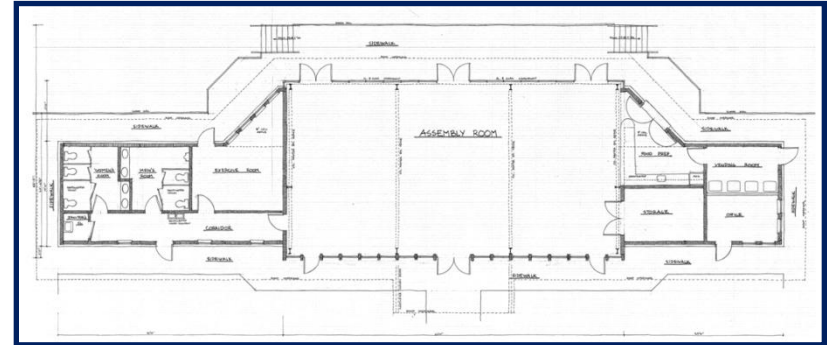
# Your Vote is Important! Sunday Sept. 16th

## Selby on the Bay Community Center

Re-designed Steel Construction in the original clubhouse location



### Community Center floor plan and patio areas



**Note:** The approved Purple Cherry Design continued the “Non-Conforming Use” waiver that allowed the SCA to rebuild on the legacy clubhouse location. This zoning exclusion expires in December 2012. **If the project has not begun by this date, to comply with current AAC zoning law we will have to start over on the clubhouse design and permit process.**

Fact Sheet: 2012 Selby on the Bay annual meeting vote to move forward and build the clubhouse. This vote follows the previous “Yes” vote to build a clubhouse that could not go forward because the Purple Cherry design exceeded the community budget (\$1.2M+). This is a redesigned building that can be constructed and financed under the current Selby Special Tax funding. The SCA building committee has worked with Bruno Reich, Architect/Contractor to develop an affordable and functional facility that will meet the needs of the community. More information is available at [www.SelbyontheBay.org](http://www.SelbyontheBay.org)

- Estimated base construction cost **\$638,000 \*\***
  - 10% Contingency funding **\$ 63,800 \*\***
  - 20 Year Mortgage *(Paid direct from AAC Special Tax - see the Selby website for loan details)*
  - Annual Operating Cost *(TBD see SCA annual and projected budget worksheets on the Selby website)*
- \*\* Note: These figures are based on project bid information from Bruno Reich contracting

Upon community approval contractor bids will be solicited with construction to begin as soon as the AAC legislation is completed to allow the clubhouse mortgage to be serviced from the Special Tax funds.

**The Vote is Sunday September 16<sup>th</sup>, meeting to start at 12:00pm at the Beach**

There will be a clubhouse Q&A session during the meeting on Sunday (before the vote). Questions and comments may be submitted in advance by email to [selbybay@gmail.com](mailto:selbybay@gmail.com)

### Community Center Location

